

# Gadget Geeks 12-in-1 USB Card Reader

## User's Manual

### CONGRATULATIONS

Congratulations on the purchase of the 12 in 1 USB Card Reader.

This device allows you to read and write data from most of the popular memory cards. Through its innovative design and high quality workmanship, this device delivers fast and reliable data transfer for your SD/SDHC/MMC/RS-MMC memory cards.

**Quick install:** *This device is Plug & Play, no driver required for Windows ME/2000/XP/Vista, Mac 9.X or higher.*

### PRODUCT SPECIFICATION

Interface:	USB 2.0 (USB 1.1 Compatible)
Power Supply:	5V DC, 500mA (via USB Connection)
Supported Memory Cards*:	SD, Mini SD, Extreme SD, Extreme III SD, Ultra II SD, SDHC, MMC-I, MMC-II, RS-MMC, MMC 4.0, Ultra MMC, RS-MMC HS & T-Flash * Some cards may require adapters that are not provided with this product.
Compatible Operating System:	Windows ME/2000/XP/Vista or higher (No Driver Required) Mac 9.0 or higher (No Driver Required)

### SETUP

#### STEP 1: PLUG THE MULTI-CARD READER INTO THE PC/MAC

Plug the USB plug into the PC/Mac. For Windows ME/2000/XP/Vista or higher and Mac 9.0 or higher, no driver is required.

#### STEP 2: INSERT THE CARD INTO THE SLOT

Insert the card into the designated slot. Slide it in until it cannot move any further. A pop-up like below will show status.



**Note:** *One does not need to put great force on the cards to properly insert the cards.*

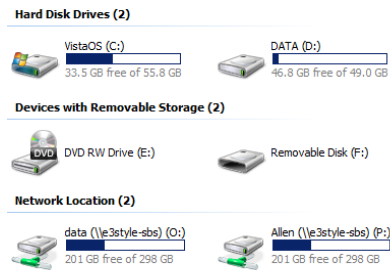
#### STEP 3: INSTALLATION IS FINALISED



A pop-up like above shows your card reader is ready to use!


To access the USB Card Reader, click:

1. "Start"
2. "My Computer"
3. "Removable Disk"



The RED LED on the card reader lights-up to indicate that the SD/MMC card reader is powered and flashes when data is transferred to and from the memory card.

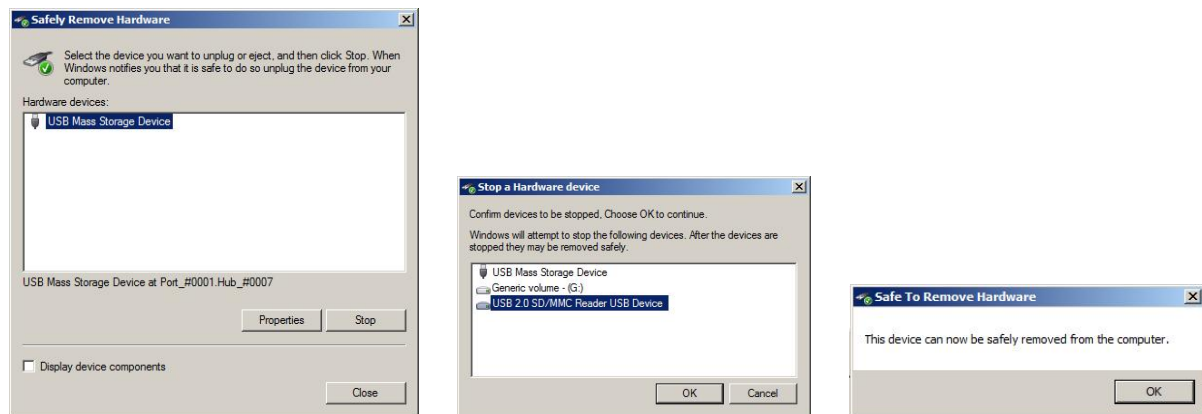
## REMOVING OF CARD READER

Point your mouse at this icon  and a "Safely Remove Hardware" message like below will appear.



Double click the icon and the "Safely Remove Hardware" windows will pop-up as shown below.

Click on the USB Mass Storage Device and then click "Stop" button. A "Stop a Hardware device" window will pop-up and choose "USB 2.0 SD/MMC Reader USB Device". Click "OK" and a "Safe to Remove Hardware" window will pop-up. You can now safely remove the card reader.



## TROUBLE SHOOTING

### I CANNOT FIND THE RIGHT SLOT FOR MY MEMORY CARD

**Solution 1:** Check the list of cards as detailed in the product specifications. If the card is listed, try turning the card around.

**Solution 2:** Some cards may require an adaptor to fit into the card-reader. Refer to your manufacturer's user manual for more information.

### I CANNOT DELETE FILES OR WRITE TO THE MEMORY CARD

**Solution:** The card may be write-protected. Check if there is a slide setting on the card and move it to unlock. Check out the manufacturer's user manual for further details.

### NON HI-SPEED MESSAGE

**Solution:** If you get the message "HI-SPEED USB Device Plugged into non-HI-SPEED USB Hub" it means that you have connected the multi card reader into a USB 1.1 port. The device will work fine but will be a bit slower.