

HDTV USB Receiver

Quick Start Guide

CONGRATULATIONS

Congratulations on the purchase of the HDTV USB Receiver. Now you can enjoy high quality TV on your PC or Laptop. With its feature packed software solution, you can also record, time shift and playback multiple formats.

We have taken great care to deliver you a high quality product. Please read this manual carefully before you commence to ensure a smooth installation.

We trust you will enjoy this product!

MINIMUM SYSTEM REQUIREMENTS

CPU:	Pentium 4 or AMD Athlon 2.0 Ghz or higher, Centrino 1.3Ghz or higher
RAM:	256MB or higher (512MB recommended)
USB Interface:	USB 2.0
Graphics Card:	16MB RAM (64MB or above recommended) Supported with Microsoft DirectX
Hard Drive Capacity:	1GB Free Hard Drive Space
Device:	CD-ROM/DVD-ROM
Operating System:	Microsoft Windows 2000 SP4/XP/Windows VISTA

CONTENTS

- ❑ HDTV USB Receiver
- ❑ Remote
- ❑ Quick Start Guide
- ❑ External Antenna
- ❑ Antenna Base with Suction Cup
- ❑ Driver & Software Disc

INSTALLATION

DRIVER INSTALLATION (WINDOWS XP)

CAUTION: DO NOT place the magnetic base of the External Antenna on top of the monitor or any other devices that might be sensitive to magnetic field. We recommend the Antenna to be placed at least 15 inches away from the computer to prevent any Hard Drive damage.

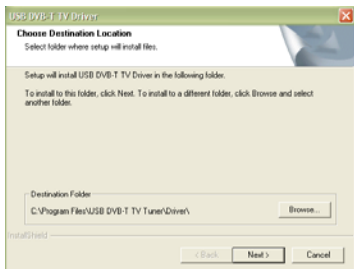
NOTE: All the dialog boxes show here are for Windows XP. Some dialog boxes and folders may vary for different version of Windows.

Step 1: Insert the driver/ software mini disc supplied into CD-ROM /DVD-ROM and the following installation menu should appear.

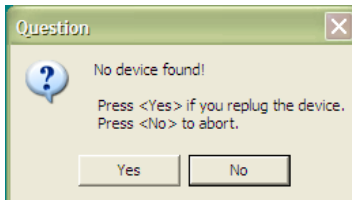


Step 2: Click on “Install Driver”

The first driver install screen should appear Click “Next”.



The second driver install screen should appear per following. No selection is required at this moment. Continue on Step 3.



Step 3: Plug the USB DVB-T receiver into the USB 2.0 socket.

Step 4: A 'Found New Hardware' Wizard window should pop-up. Select "Install from a list or specific location (Advanced)" and click on "Next".



Step 5: Select "Search removable media (floppy, CD-ROM...)" and click on "Next".



Step 6: Hardware Installation window will pop-up. Click on “Continue Anyway”.



Step 7: Click on “Finish” once installation is completed.



Step 8: If Windows continues to find new hardware as per following screen shot. Repeat **Step 5** to **Step 8** to complete the installation process.

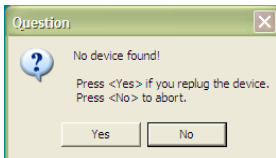


Step 9: Once all the drivers are installed. Windows will notify your new



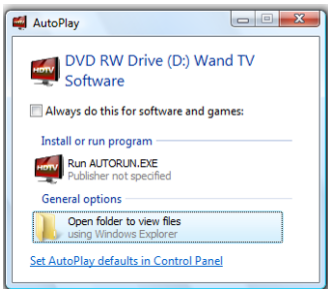
hardware is ready to use.

Step 10: Back to the second driver installation screen per following. Click “Yes” to complete the driver installation process.



DRIVER INSTALLATION WINDOWS VISTA

Step 1: Insert the driver/software mini disc supplied into CD-ROM/DVD-ROM. The following screen will appear click “Run AUTORUN.EXE”

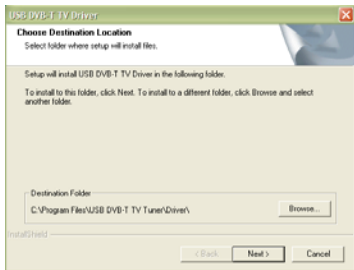


Step 2: The following installation menu should appear, click on “Install Driver”



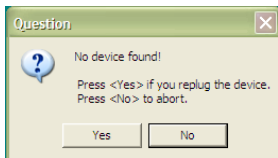
Step 3: The Windows ‘User Accounts Screen’ will appear and request the user permission to install the Driver. Please Click on ‘Allow’ to give MS Vista permission to install the drivers.

The first driver install screen should appear Click “Next”.



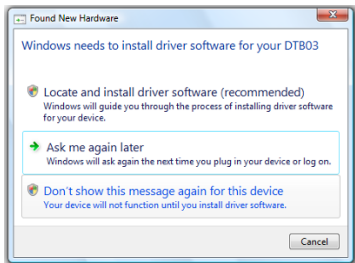
Step 4: The second driver install screen should appear per following.

No selection is required at this moment. Continue on Step 5.



Step 5: Plug the USB DVB-T receiver into the USB 2.0 socket.

Step 6: Found New Hardware window should pop-up. Select “Locate and Install driver software (recommended)”.



Step 7: Select “Search removable media (floppy, CD-ROM...)” and click on “Next”.

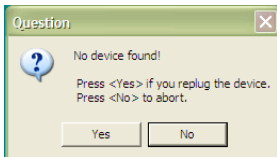
NOTE: If any screen pop up and advise that “Windows encountered a problem installing the driver software for your device”, do not be alarmed by this message as the software has been installed successfully. Click on “Close”



Step 8: Once all the drivers are installed. Windows will notify your new hardware is ready to use.



Step 9: Back to the second driver installation screen per following. Click “Yes” to complete the driver installation process.



SOFTWARE INSTALLATION

The following steps will guide you through the installation process for Blaze HDTV Player.

Note: This software requires DirectX 9 installed in your computer. If your computer does not have DirectX 9 or above, select the “Install DirectX 9” from the installation menu and follow the prompt to complete installation process.

Step 1: Refer back to the installation menu and click on “Install Blaze HDTV Player”



Step 2: Select language as “English” and click on “OK” to commence installation process.

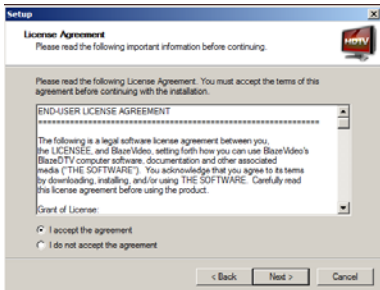


Step 3: Setup

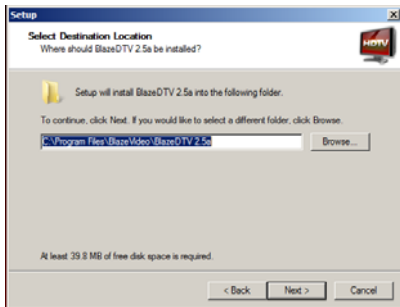


screen should appear, click on “Next”.

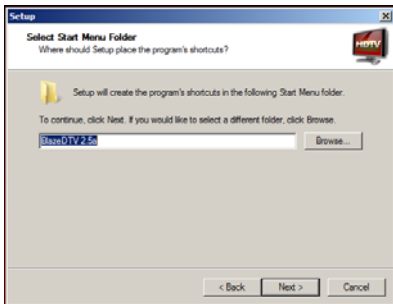
Step 4: Select “I accept the agreement” then click on “Next”. (It is recommended to read through and understand license agreement before proceed).



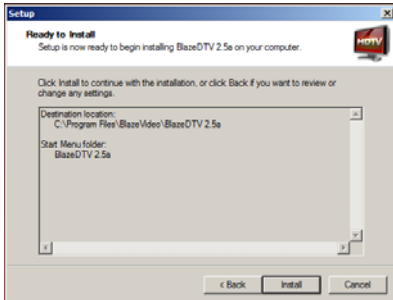
Step 5: Select a Destination Location for software installation, click on “Next” to proceed. (It is strongly recommended to use the default path assigned).



Step 6: Click on “Next” to setup the Start Menu Folder.



Step 7: Check all the installation details and click on “Install” to precede installation process.



Step 8: Once software is installed. Click on “Finish” to view Readme instruction and Launch BlazeDTV 2.5 software.



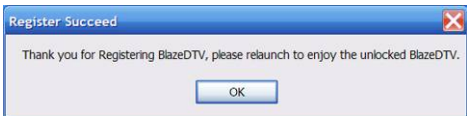
BLAZE HDTV PLAYER SETUP

The following steps will guide you through the setup of the Blaze HDTV Player.

Step 1: Registration is required when starting the software for the first time. Enter your name, email and serial number (located on the installation disc) and click on “Register!” to precede registration.

A screenshot of a dialog box titled "Enter registration information". The dialog box contains three text input fields labeled "User Name:", "E-mail:", and "Serial Number:". Below the input fields are three buttons: "Register!", "Cancel", and "Help". The text above the input fields reads: "Enter your name, E-mail, and the serial number for your copy of the program. The serial number is located on the outside of the CD case, or on the receipt page for web purchases. You can also locate the serial number for web purchases in your online order history."

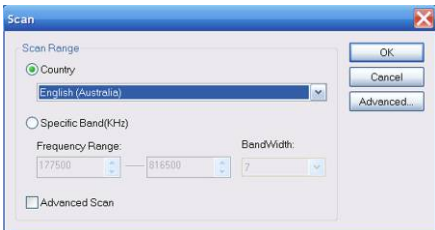
Step 2: Once registered, click on “OK”.



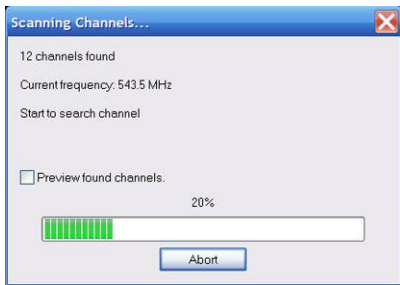
Step 3: When first time using the software, the software will request to scan channels, press “Yes” to enter scan setting. (Please ensure that an antenna is attached to the USB DVB-T device.)



Step 4: Select “Australia” under country selection and click on “OK” to start scanning.



Step 5: Once the scanning is complete, you are ready to enjoy high quality free to air digital programs.



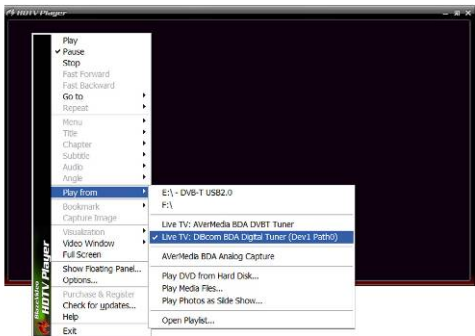
NOTE: For more detailed software function and setting adjustment, please refer to User's Manual included in the driver/software disc supplied. Directory path [CD-Driver]:\User Manual\Manual.pdf. Alternatively, you can click on the "Manual" selection from the installation menu for further assistance.

TROUBLESHOOTING

CANNOT LOCATE ANY CHANNEL

Solution: Ensure the correct receiver is selected and there is enough signal strength in your area.

Step 1: Right click on the player screen, select “Play from” then select Live TV: EC168TV Tuner (Dev1 Path0).



Step 2: Place antenna on top of a metal surface to enhance the signal reception. The magnetic base of the external antenna should stick to the metal surface. **CAUTION:** DO NOT place the magnetic base on top of the monitor or any other devices that might be sensitive to magnetic field.

Step 3: Move the external antenna around different locations and check the signal strength and quality. (Refer to the software user manual for the location indication of signal strength and quality). User's Manual directory path *[CD-Driver]:\User Manual\Manual.pdf*

USB CONNECTION DOES NOT SEEM TO WORK

Solution: Perform the following actions.

Step 1: Ensure USB DVB-T receiver is connected to an USB 2.0 socket.

Step 2: Disconnect and re-connect USB cable.

Step 3: USB Cable can only be extended to a length of 5 meters without amplification. Use a shorter USB cable to connect from your USB DVB-T Receiver to your computer.

NOTES

- You will need to scan for TV Channels again if you travel to a new country or region, which have different broadcast stations.
- If you use an extendable aerial, it is recommended to reduce the aerial length for better reception.
- Programs and channels are subject to alteration and may vary according to coverage by country and region.

- Reception may depend on the network broadcasting strength as well as the type and condition of existing terrestrial aerial installation.
- For digital terrestrial reception, a high gain aerial is recommended.
- Make sure that you always use your DTV Stick with the same USB port.
- If you move it to a different USB port after installation and setup, you may have to install the driver again.