



Gadget Geek

# HDTV USB Receiver

## Quick Start Guide

v3

## CONGRATULATIONS

Congratulations on the purchase of the HDTV USB Receiver. Now you can enjoy high quality TV on your PC or Laptop. With its feature packed software solution, you can also record, time shift and playback multiple formats.

We have taken great care to deliver you a high quality product. Please read this manual carefully before you commence to ensure a smooth installation.

We trust you will enjoy this product! Gadget Geek also have a new website that will have driver updates, downloads and FAQ's which will help with this product. Please go to: [www.gadgetgeek.biz](http://www.gadgetgeek.biz)

## MINIMUM SYSTEM REQUIREMENTS

CPU:	Pentium 4 or AMD Athlon 2.0 Ghz or higher, Centrino 1.3Ghz or higher
RAM:	256MB or higher (512MB recommended)
USB Interface:	USB 2.0
Graphics Card:	16MB RAM (64MB or above recommended) Supported with Microsoft DirectX
Hard Drive Capacity:	1GB Free Hard Drive Space
Device:	CD-ROM/DVD-ROM
Operating System:	Microsoft Windows 2000 SP4/XP/Windows VISTA, Windows 7

## CONTENTS

- ❑ HDTV USB Receiver
- ❑ Remote
- ❑ Quick Start Guide
- ❑ External Antenna
- ❑ Antenna Base with Suction Cup
- ❑ Driver & Software Disc

**Antenna Note:** the antenna is in 2 parts for the purpose of fitting into the package. Please screw the antenna wire into the base before proceeding.

**Note:** before inserting the 'Gadget Geek HDTV receiver' into your PC or Laptop, please install driver first.

## INSTALLATION

### DRIVER INSTALLATION

**CAUTION: DO NOT** place the magnetic base of the External Antenna on top of the monitor or any other devices that might be sensitive to magnetic field. We recommend the Antenna to be placed at least 15 inches away from the computer to prevent any Hard Drive damage.

**NOTE:** All the dialog boxes show here are Similar for Windows XP, Windows Vista and Windows 7. Some dialog boxes and folders may vary slightly for the different versions of Windows.

**Step 1:** Insert the driver/ software mini disc supplied into CD-ROM /DVD-ROM and the following installation menu should appear. (Remember to **not install the stick into the PC until this step is complete**)

***Windows Vista & Windows 7 users:***

After the CD is inserted, this is the first screen you will see.  
Simply Click on 'Run AUTORUN EXE'

**Step 2:** Click on “Install Driver” at the top of the menu.



**Step 3:** You will see another couple of screens referring to the driver installation. Click ‘Next’ then click ‘finish’ when complete. This is illustrated n the next page.

**It is 3 easy steps for Driver installation**

1



*Install Driver*

2



*Click 'Next'*

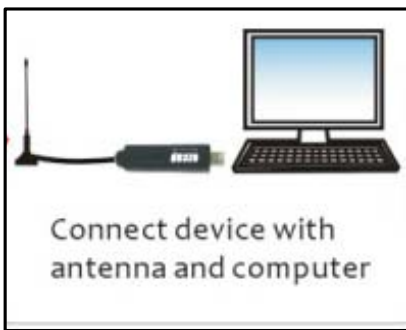
3

*Click 'Finish' when complete.*

## SOFTWARE & RECIEVER INSTALLATION

It is now, that you may plug in the USB DVB-T receiver into the USB 2.0 socket. *(Note; ensure you continue to use the same socket whenever you plug the receiver back into the PC or Laptop, or it may become necessary to install the drivers again)*

**Step 1:** Plug In the USB HDTV receiver.

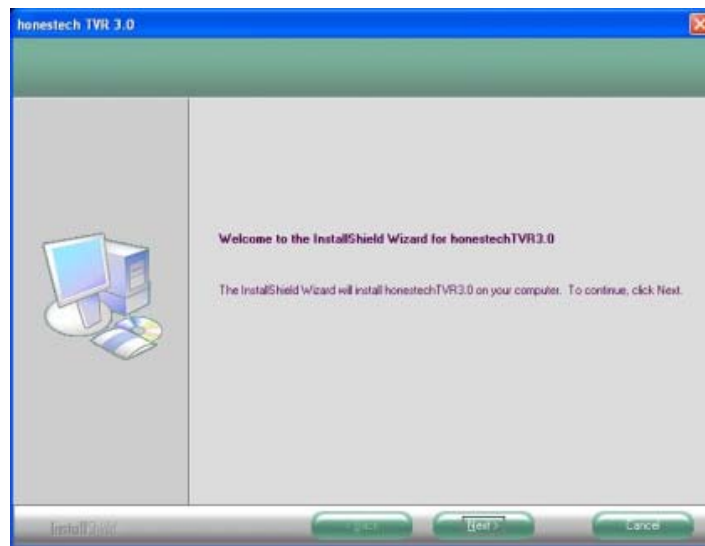


At this stage you may see a Windows message informing you that a new device is installed and it is locating the drivers for it.

**Step 2:** Install Software.

Click on 'Install HDTV Player' from the main menu.

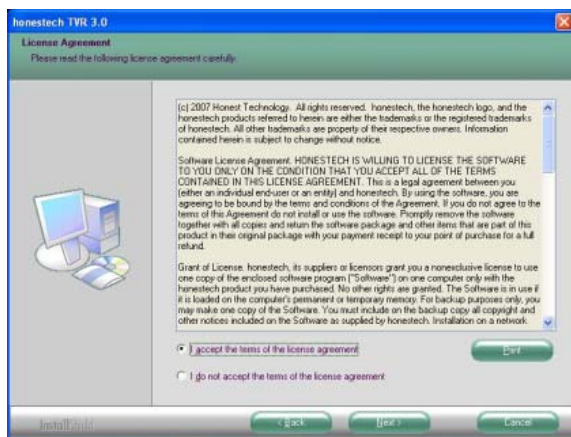
**Step 1:** The Windows ‘User Accounts Screen’ will appear and request the user permission to install the Driver. Please Click on ‘Allow’ to give MS Vista permission to install the drivers. Windows 7 will also have a similar permission screen. If you have Windows XP, you can just click next. You will then see a screen as below, an install shield for ‘Honestech TVR 3.0’. Click on ‘**Next**’.



**Step 2:** Accept the ‘Terms of the License agreement’ and click ‘Next’.

**Step 3:**

Select a Destination Location for software installation, click on “Next” to proceed. (It is strongly recommended to use the default path assigned).



**Step 4:** Click on “Next” on the next couple of screens.

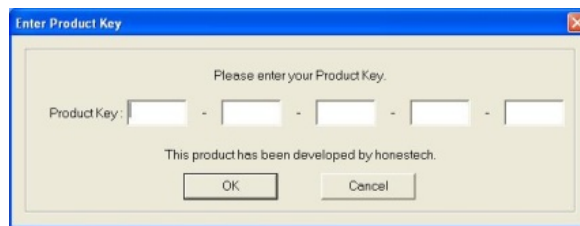
The final screen will inform you that ‘Maintenance is complete’, meaning the software is now installed. Click on ‘Finish’.

### **Final Step:**

At this stage, if you have ‘Windows XP’, ‘Windows Vista’, or ‘Windows 7’, you will be prompted to restart your computer for the software to take effect. Click ‘Yes, I want to restart my computer now’.

## SERIAL NUMBER & CAPTURE DEVICE

After the computer has restarted, find the 'Honestech TVR 3.0 icon which should be on your desktop and 'double click' it to get it going. At this stage, a screen will pop up prompting you for a serial number for the software. The serial number is located on the rear of the CD sleeve.



Ensure your receiver is still plugged into your computer. The first screen you will see is as below. It is important that you select your country. Australia if that is where you are located. Select your video capture device. In this case it will be 'AF9015 BDA Filter'. Note, if this is not selected, then the program will try to select another device such as a webcam that you may have attached. Click on 'Next' when done.

## SCANNING FOR CHANNELS

Now it is time to look for Channels. Please ensure the antenna that came with the product is connected to the receiver, and that you are in a good signal area. Ensure that the correct country is selected and click on 'Scan'. It will then look for local TV stations. If the receiver has not picked anything up, try moving around to another location. If you are still not getting anything, plug the unit into an outdoor antenna. This may be the one you use to watch your TV in the lounge-room. Try the steps to scan channels once again. It will most likely be that the area you are located is too weak for the antenna to pick up.

Once the scanning is complete, you are ready to enjoy high quality free to air digital programs.

## QUICK CONTROLS



## CD MANUAL

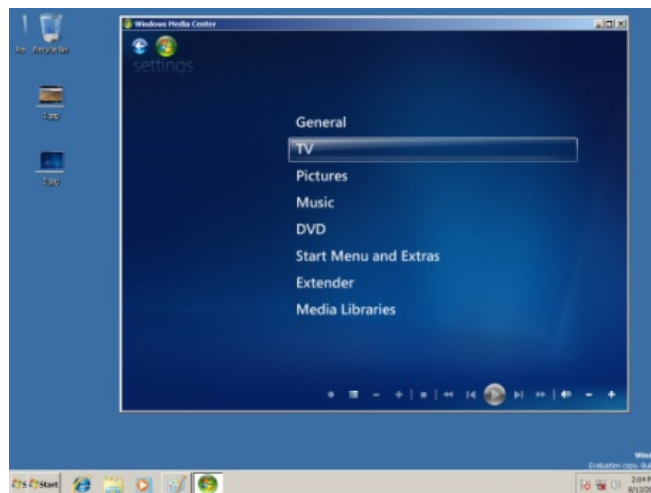
The Manual located on the CD that came with this unit has a much more comprehensive guide on:

- Timeshift
- Recording shows
- Setting Scheduled recordings

## USING WINDOWS 7 & MEDIA CENTRE

A really good feature of the new 'Windows 7' is that it has an inbuilt program called 'Windows Media Centre' which the 'Honestech' software is compatible with. 'Windows

Media Center' will allow access to an EPG (electronic program guide) as long as you have an active connection to the internet. It will allow you to record and watch TV shows, as well as many other features like an advanced recording menu.



**Windows 7** users can actually use the Media center program instead of the one that came with the receiver if preferred.

**NOTE:**

For help on using the *Windows Media Center* program that comes with *Windows 7*, please refer to the manual that came with the product. Insert the CD into your computer, and select the 'manual' option from the menu.

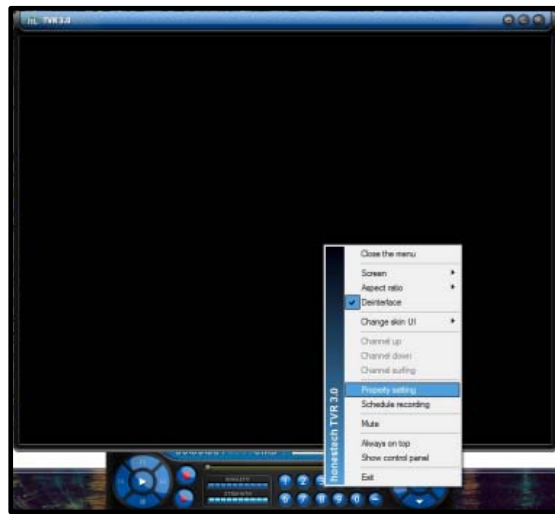
Alternatively, you can visit Microsoft:  
<http://windowshelp.microsoft.com>

# TROUBLESHOOTING

## CANNOT LOCATE ANY CHANNEL

**Solution:** Ensure the correct receiver is selected and there is enough signal strength in your area.

**Step 1:** right click on the black area where there should be an image and select 'Property setting'



Then under 'video capture device', ensure that AF9015 BDA Filter 'is selected.

If that all checks out and is correct, try plugging the unit into the main external antenna. This might be the one that you use to watch TV in the lounge room. If you are receiving all the channels through the external antenna, then the unit is working fine. Signal may be a problem in the area you are located for the small antenna provided with the product.

**Step 2:** Place antenna on top of a metal surface to

enhance the signal reception. The magnetic base of the external antenna should stick to the metal surface.

**CAUTION:** DO NOT place the magnetic base on top of the monitor or any other devices that might be sensitive to a magnetic field.

**Step 3:** Move the external antenna around different locations and check the signal strength and quality. (Refer to the software user manual for the location indication of signal strength and quality).

## TIPS FOR SCANNING:

For time saving when scanning and you are located in a weak signal area, you can try special frequencies for scanning. For example: if you know one of the frequency channels for the DVB-T is 226500KHZ, you can scan it as in the example image (input both 226500 in the "start" and the "end"), it will be very fast, so you can scan several times until you get channels located.

## POWER LIGHT AND SIGNAL

Please note: Whenever the USB HDTV receiver scans and finds a channel, an LED will light up inside the receiver to indicate it has found a channel. This will be seen from the top of the receiver through some exposed holes. No blue light is not an indication of a No Power situation, but rather it refers to signal.

## USB CONNECTION DOES NOT SEEM TO WORK

### **Solution: Perform the following actions.**

- \* Ensure USB DVB-T receiver is connected to a USB 2.0 socket; it will not be effective with USB 1.1.
- \* Disconnect and re-connect USB cable.
- \* USB Cable can only be extended to a length of 5 meters without amplification. Use a shorter USB cable to connect from your USB DVB-T Receiver to your computer.

## OTHER NOTES

- 
- You will need to scan for TV Channels again if you travel to a new country or region, which have different broadcast stations.
- Programs and channels are subject to alteration and may vary according to coverage by country and region.
- Reception may depend on the network broadcasting strength as well as the type and condition of existing terrestrial aerial installation.
- For digital terrestrial reception, a high gain antenna is recommended.
- Make sure that you always use your DTV Stick with the same USB port.
- If you move it to a different USB port after installation and setup, you may have to install the driver again.

Please remember to check out our new site for products, driver updates, FAQ's and manuals as well as other information to help with your product:

[www.gadgetgeek.biz](http://www.gadgetgeek.biz)